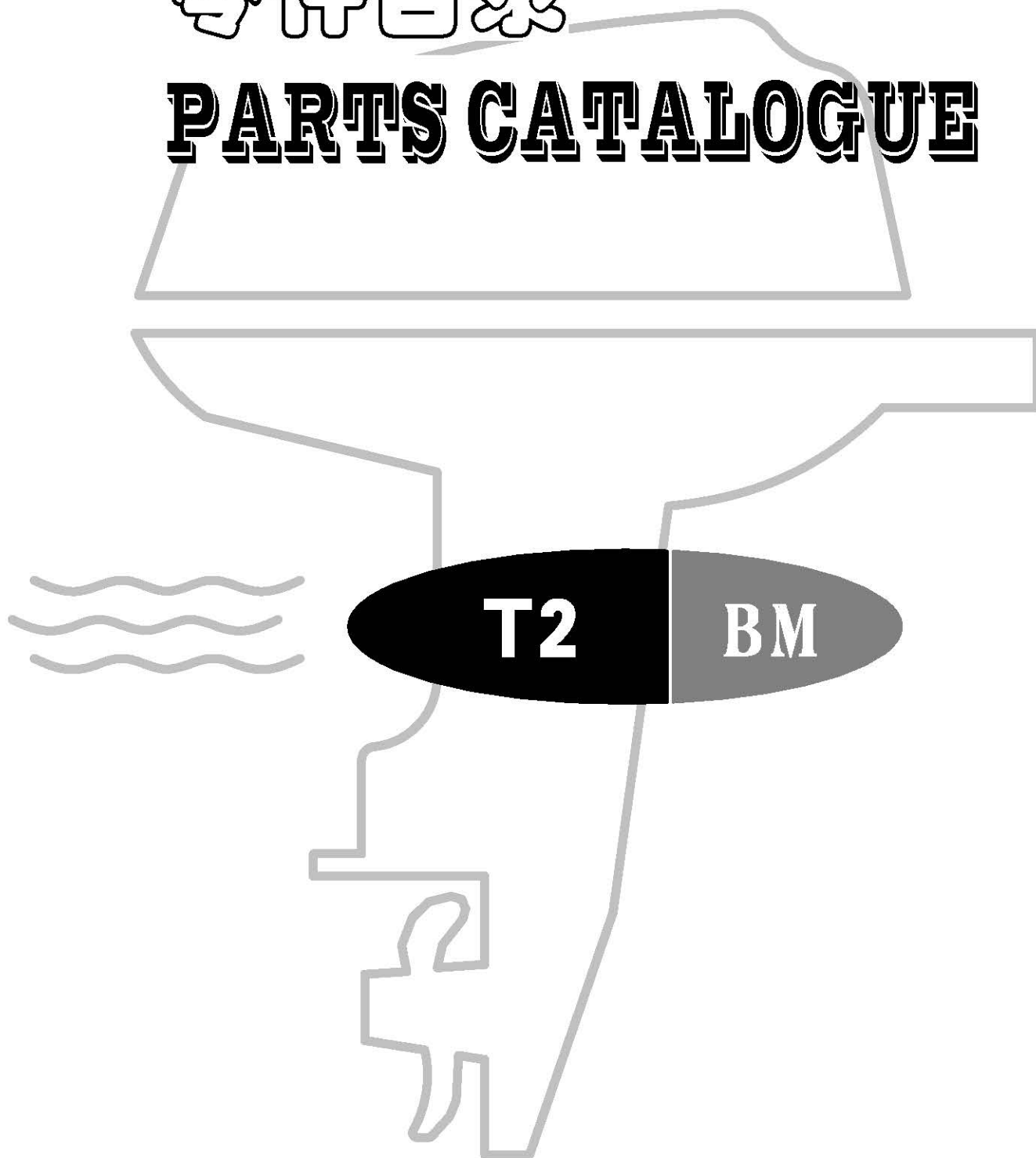


零件目录

**PARTS CATALOGUE**



苏州百胜动力机器有限公司

SUZHOU PARSUN POWER MACHINE CO., LTD

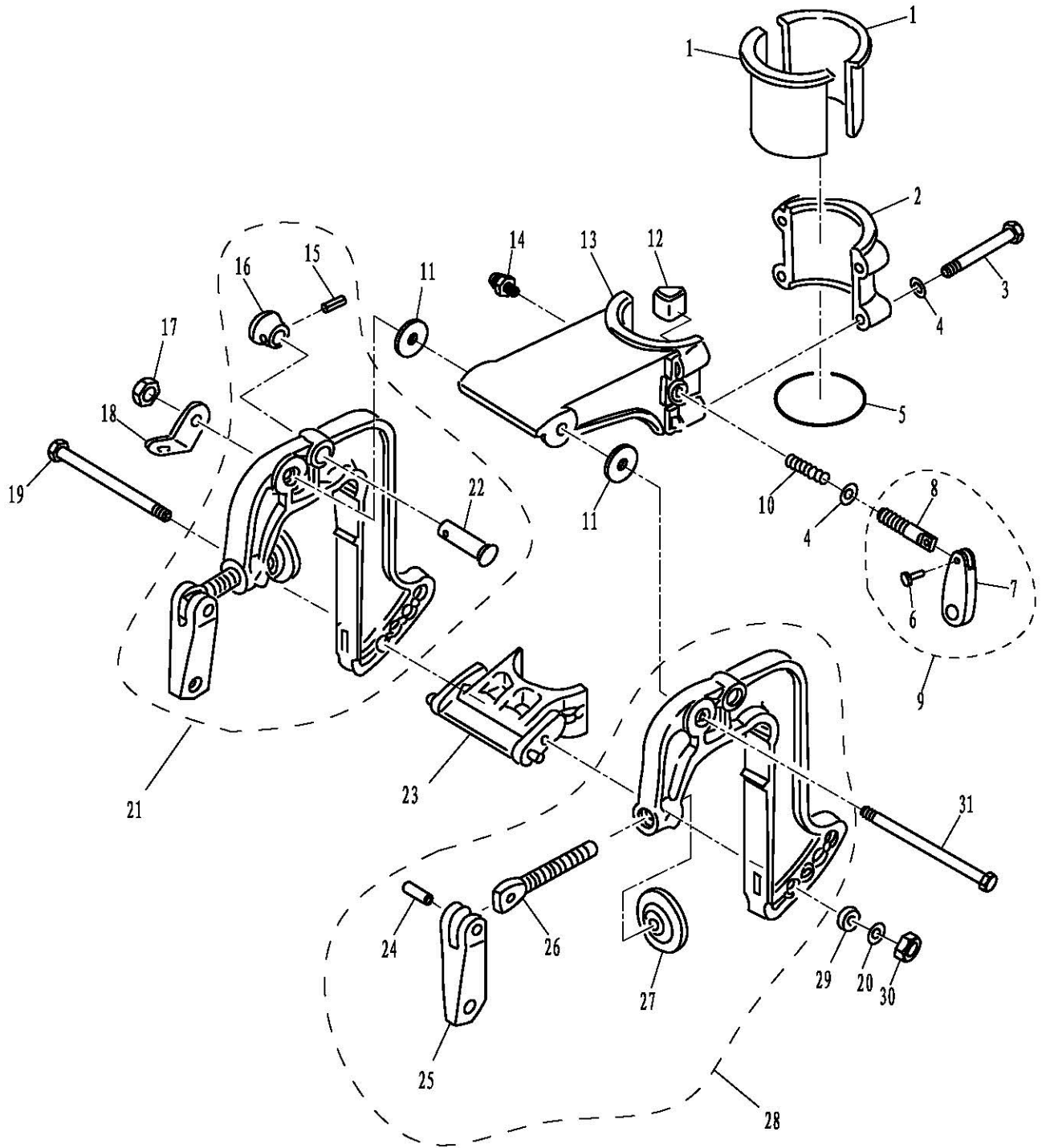
# 目次

## CONTENTS

托架	1~2
BRACKET	1~2
水上装置壳体	3~4
UPPER CASING	3~4
顶罩	5~6
TOP COWLING	5~6
水下装置壳体&驱动系统	7~9
LOWER CASING & DRIVE	7~9
点火系统	10~11
IGNITION SYSTEM	10~11
曲轴&活塞	12~13
CRANKSHAFT & PISTON	12~13
曲轴箱	14~15
CRANKCASE	14~15
燃油系统	16~17
FUEL SYSTEM	16~17
化油器总成	18~19
CARBURETOR ASSY	18~19
起动机	20~21
STARTER	20~21
发动机头总成(修理件)	22~23
CYLINDER HEAD ASSY (REPAIR KIT)	22~23
附录1(修理件)	24~25
APPENDIX 1 (REPAIR KIT)	24~25

零部件名称: 托架

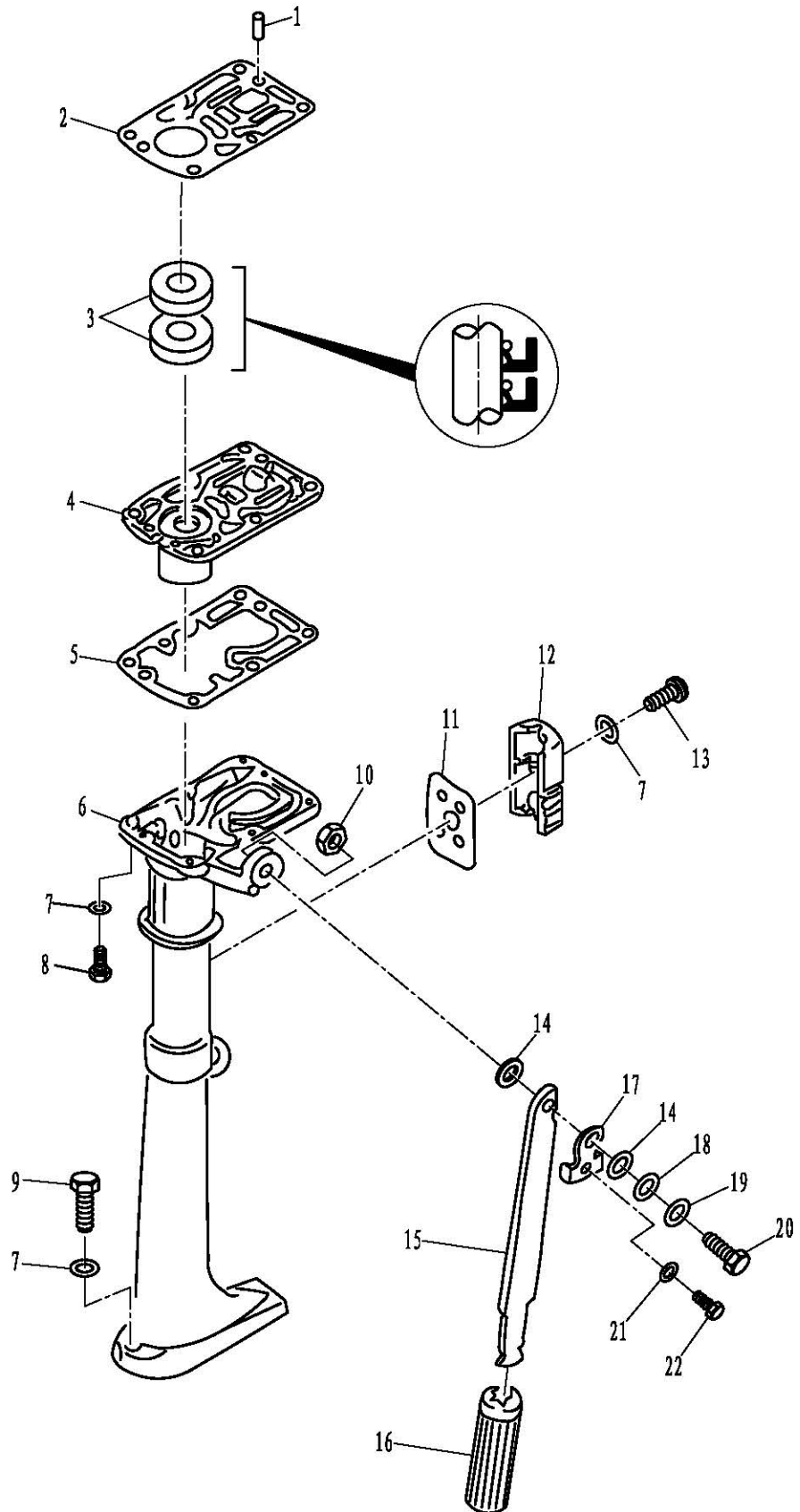
PARTS NAME: BRACKET





零部件名称: 水上装置壳体

PARTS NAME: UPPER CASING



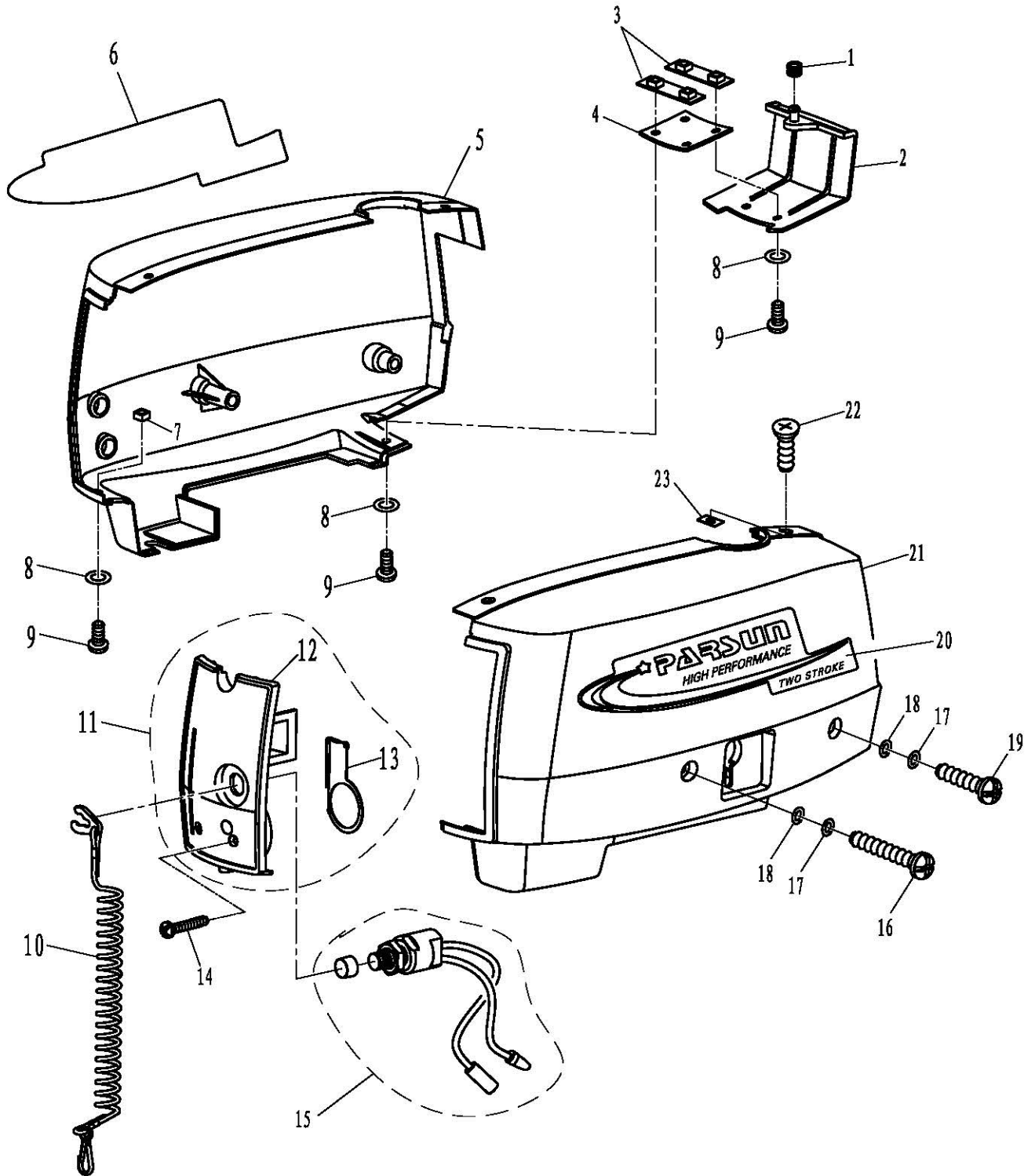


零部件名称:

顶罩

PARTS NAME:

TOP COWLING

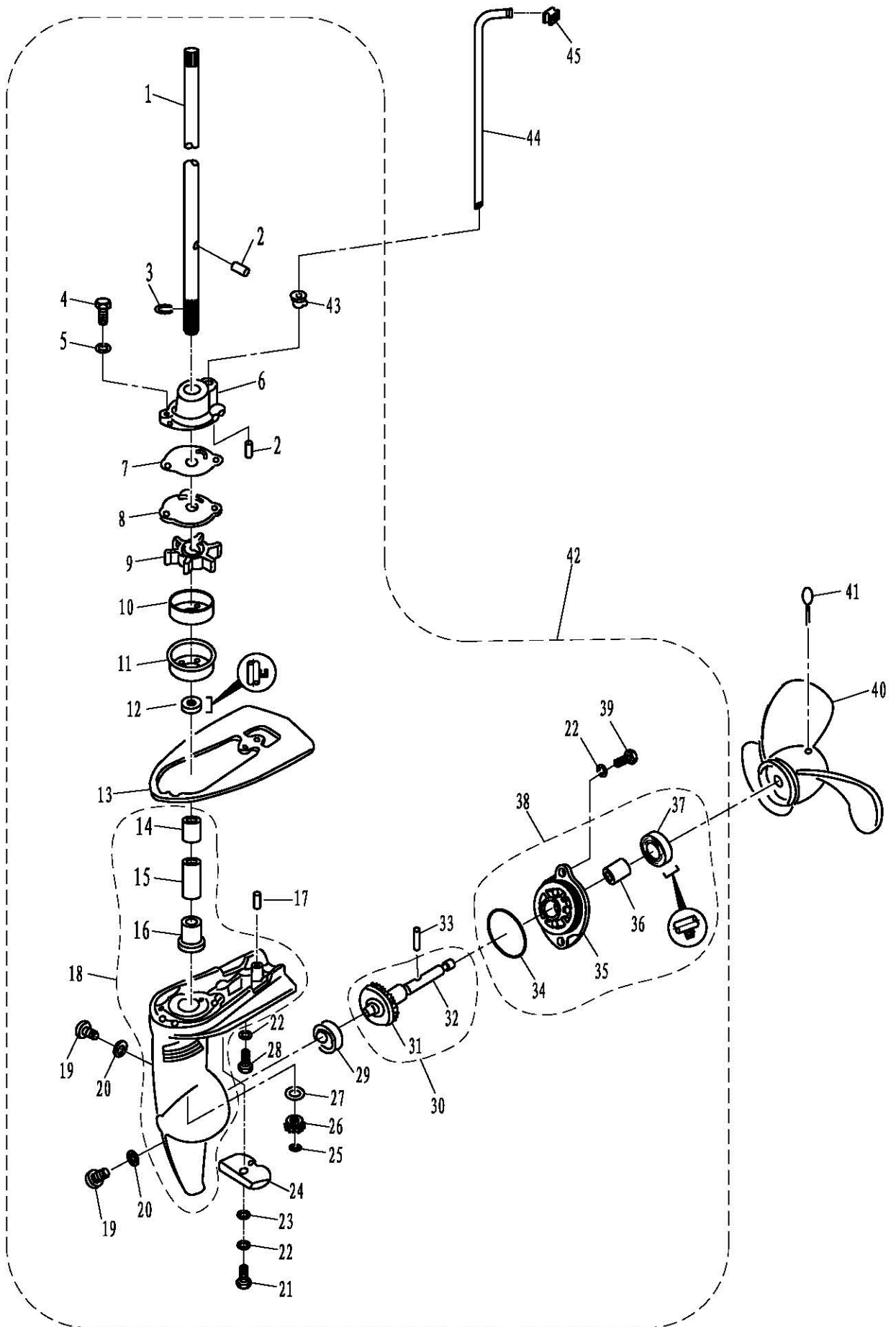






零部件名称: 水下装置壳体&驱动系统

PARTS NAME: LOWER CASING & DRIVE



零部件名称:

水下装置壳体&amp;驱动系统

PARTS NAME:

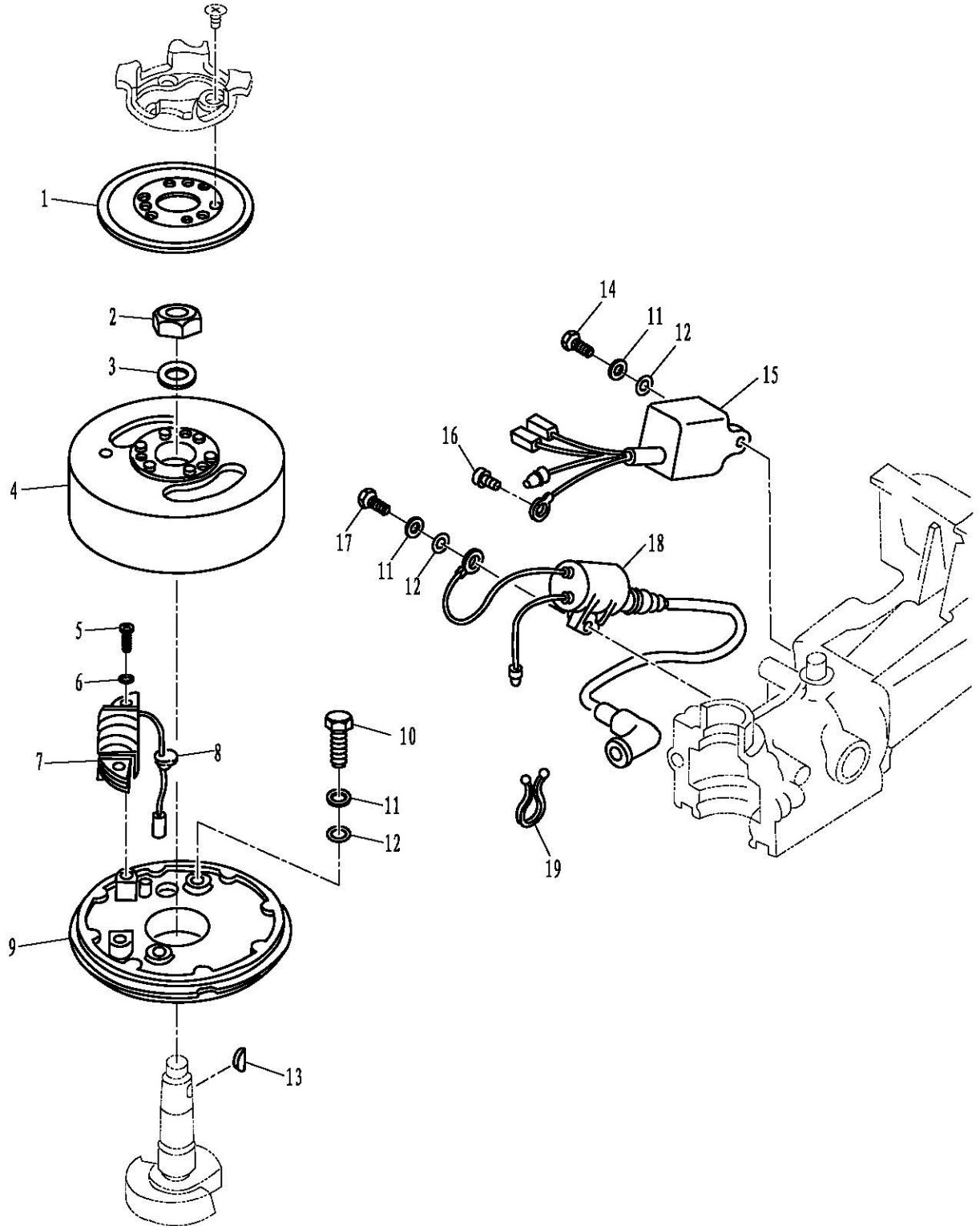
LOWER CASING &amp; DRIVE

SN. 参照号码	PART NO. 零件编号	DESCRIPTION 零件名称(中文)	DESCRIPTION 零件名称(英文)	QTY 数量				REMARKS 备注
1	T2-03000008	驱动轴	DRIVE SHAFT	1				
2	F2.6-03000013	叶轮定位销 $\phi 3.5 \times 7$	DOWEL PIN $\phi 3.5 \times 7$	3				
3	F2.6-03000012	轴用钢丝挡圈	CIRCLIP	1				
4	GB/T5783-M5x16	六角螺栓 M5x16	BOLT M5x16	2				
5	GB/T97.1-5	平垫圈5	WASHER 5	2				
6	T2-03000009	水泵座	COVER, WATER PUMP HOUSING	1				
7	T2-03000010	水泵密封垫	GASKET, WATER PUMP	1				
8	T2-03000016	外挡板	OUTER PLATE	1				
9	T2-03000100	叶轮组件	IMPELLER ASSY	1				
10	T2-03000006	水泵内壳	INNER SHELL, WATER PUMP	1				
11	T2-03000007	内壳护盖	COVER, INNER SHELL	1				
12	T2-03000018	驱动轴下油封 $9.8 \times 21 \times 8$	OIL SEAL	1				
13	T2-00000002	防涡流板	PLATE	1				
14	T2-03000004	不带档边筒形轴承	BEARING	1				
15	T2-03000003	驱动轴衬套	BUSHING, DRIVE SHAFT	1				
16	T2-03000002	带档边筒形轴承	BEARING	1				
17	T2-00000001	定位销 $\phi 5 \times 18$	PIN $\phi 5 \times 18$	2				
18	T2-030000019	水下装置壳体组件	LOWER CASING ASSY	1				
19	F4-03000023	注油孔螺塞	PLUG, OIL HOLE	2				
20	F4-03000024	注油孔螺塞垫	GASKET	2				
21	GB/T5783-M6x12	六角螺栓 M6x12	BOLT M6x12	1				
22	GB/T97.1-6	平垫圈6	WASHER 6	4				
23	GB/T861.1-6	内齿锁紧垫圈6	WASHER 6, INTERNAL TOOTH	1				
24	F4-03000022	阳极	ANODE	1				
25	GB/T896-6	开口挡圈6	CIRCLIP 6	1				
26	T2-03000013	主动齿轮	INITIATIVE GEAR	1				
27	F2.6-03000017	主动轮填隙片	SHIM	1				
28	GB/T5783-M6x30	六角螺栓 M6x30	BOLT M6x30	1				
29	T2-03000005	深沟球轴承 6000P5	BEARING 6000P5	1				
30	T2-03000200	螺旋桨轴组件	SHAFT ASSY, PROPELLER	1				
31	T2-03000201	正档齿轮	FORWARD GEAR	1				
32	T2-03000202	螺旋桨轴	SHAFT, PROPELLER	1				
33	T2-03000014	螺旋桨限位销	PIN, PROPELLER	1				
34	GB/T3452.1- $\phi 42.2 \times 2.4$	O形密封圈 $\phi 42.2 \times 2.4$	O-RING $\phi 42.2 \times 2.4$	1				
35	T2-03000301	水下装置壳体盖	COVER, LOWER CASING	1				
36	T2-03000302	筒形轴承	BEARING	1				
37	T2-03000303	壳盖油封 $11 \times 21 \times 8$	OIL SEAL $11 \times 21 \times 8$	1				
38	T2-03000300	水下壳体盖组件	COVER ASSY, LOWER CASING	1				
39	GB/T5783-M6x16	六角螺栓 M6x16	BOLT M6x16	2				
40	T2-03000015	螺旋桨体	PROPELLER	1				
41	GB/T91-3.2x40	开口销 3.2x40	COTTER PIN	1				
42	T2-03000000	水下装置组件	LOWER CASING ASSY	1				
43	T2-03000011	水管导向圈	SEAL, WATER PIPE	1				



零部件名称: 点火系统

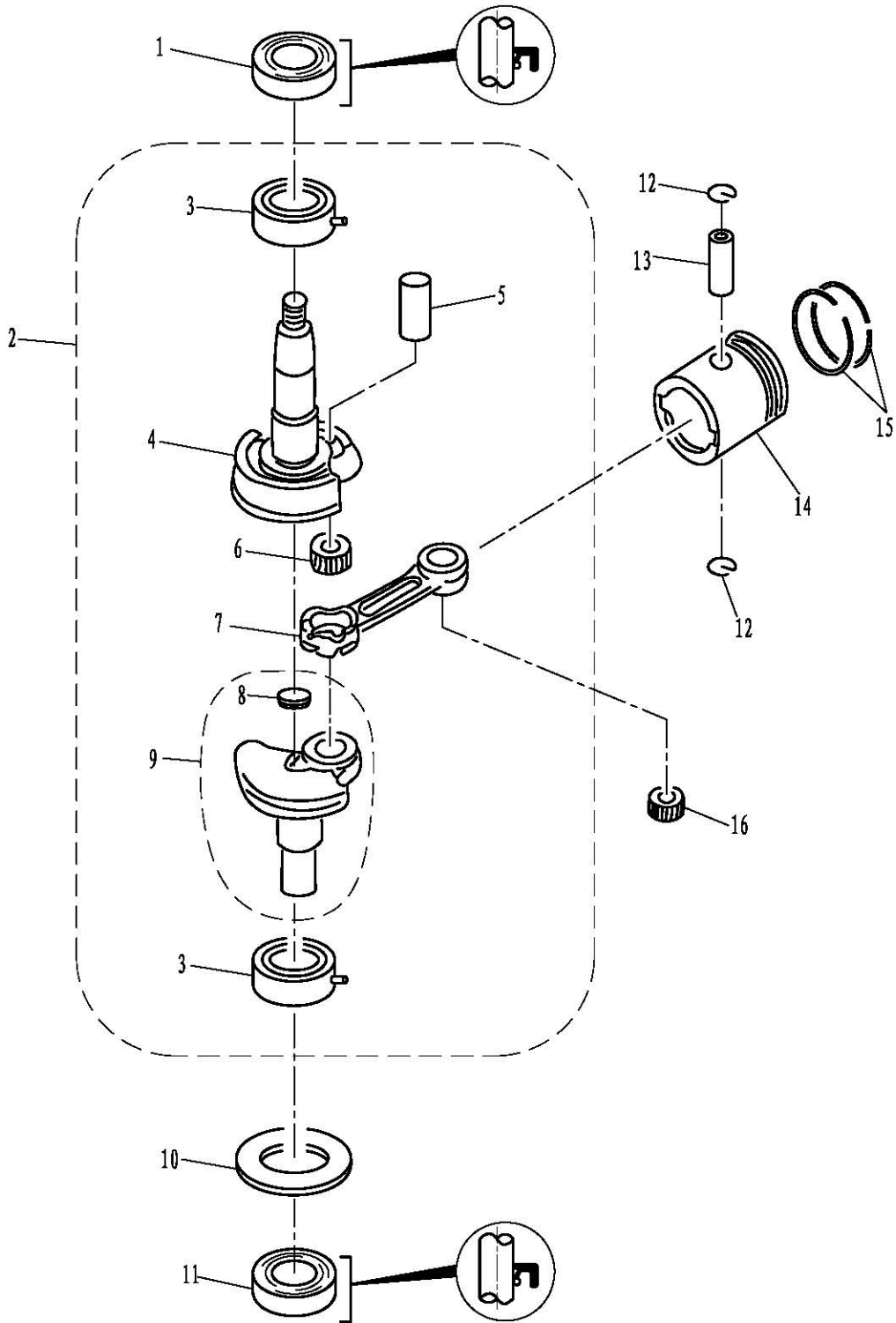
PARTS NAME: IGNITION SYSTEM





零部件名称: 曲轴&活塞

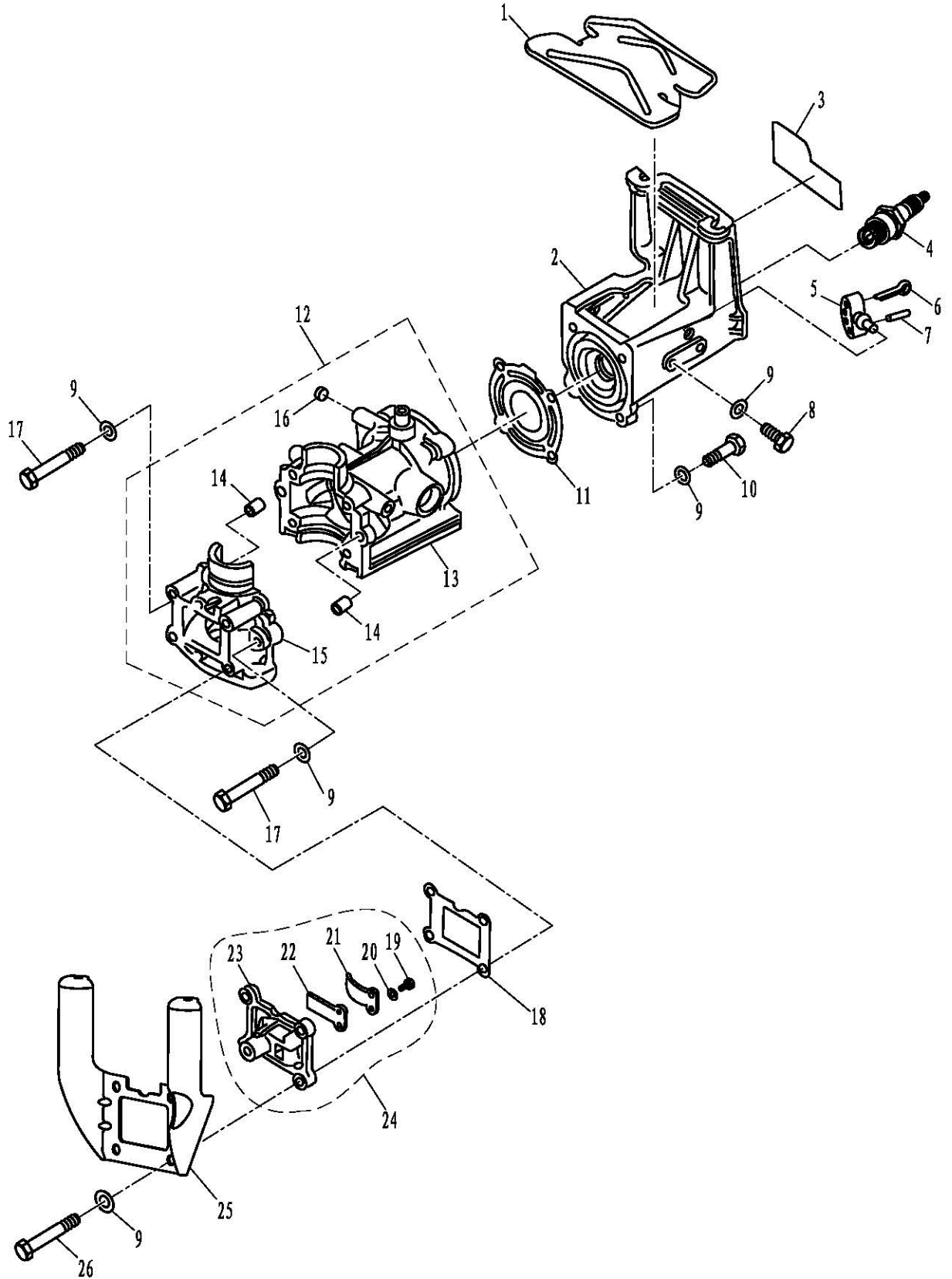
PARTS NAME: CRANKSHAFT & PISTON





零部件名称: 曲轴箱

PARTS NAME: CRANKCASE

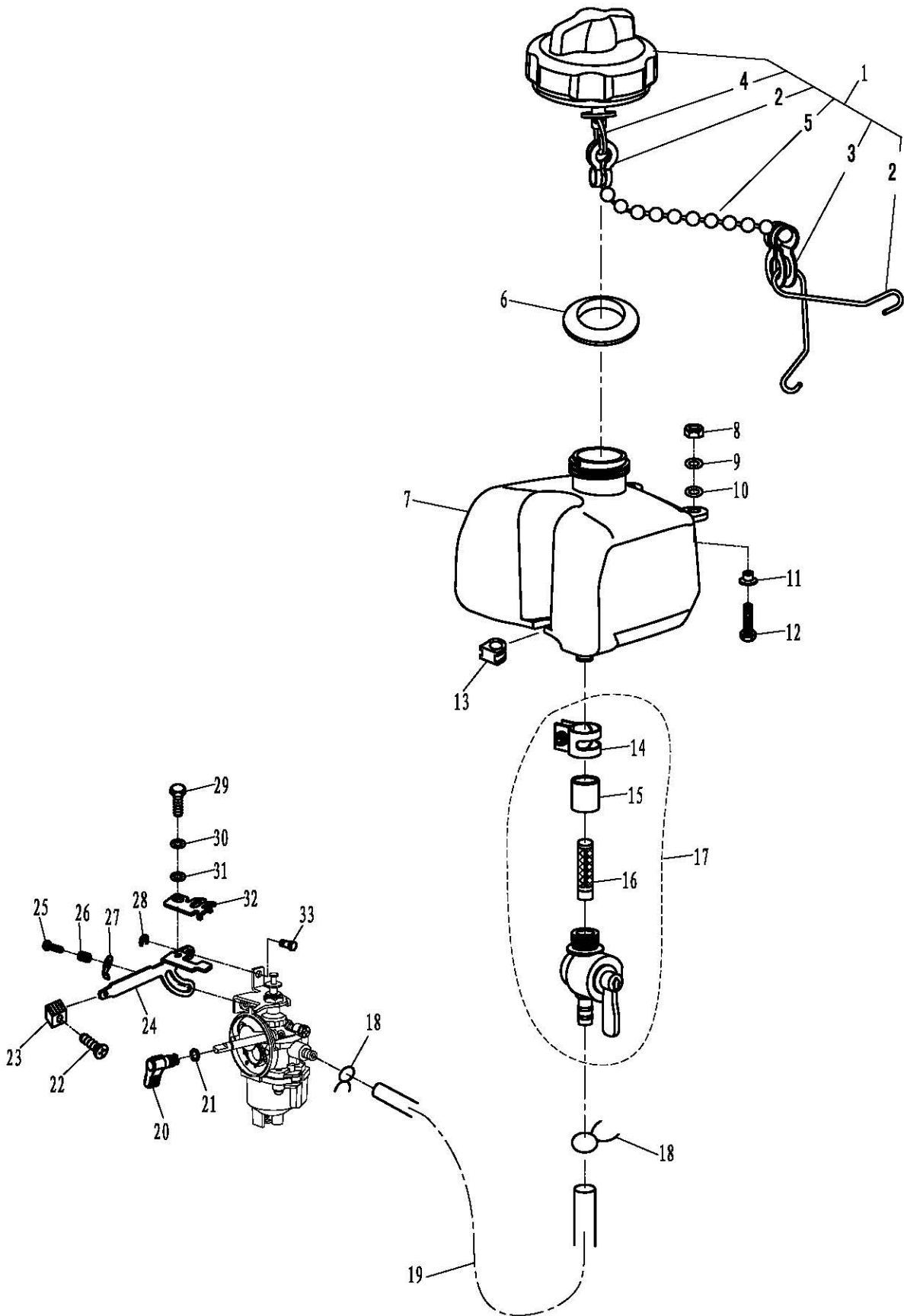






零部件名称: 燃油系统

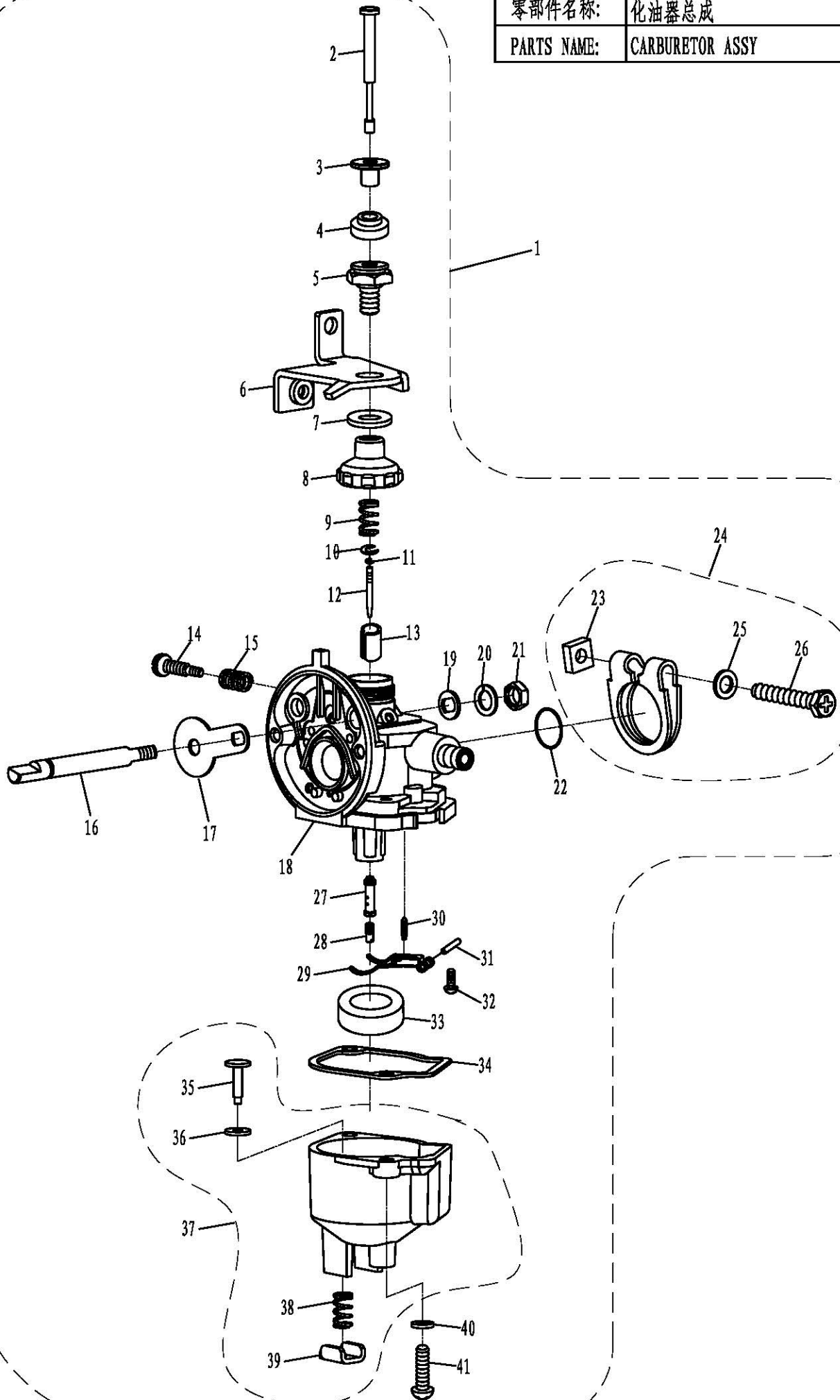
PARTS NAME: FUEL SYSTEM





零部件名称: 化油器总成

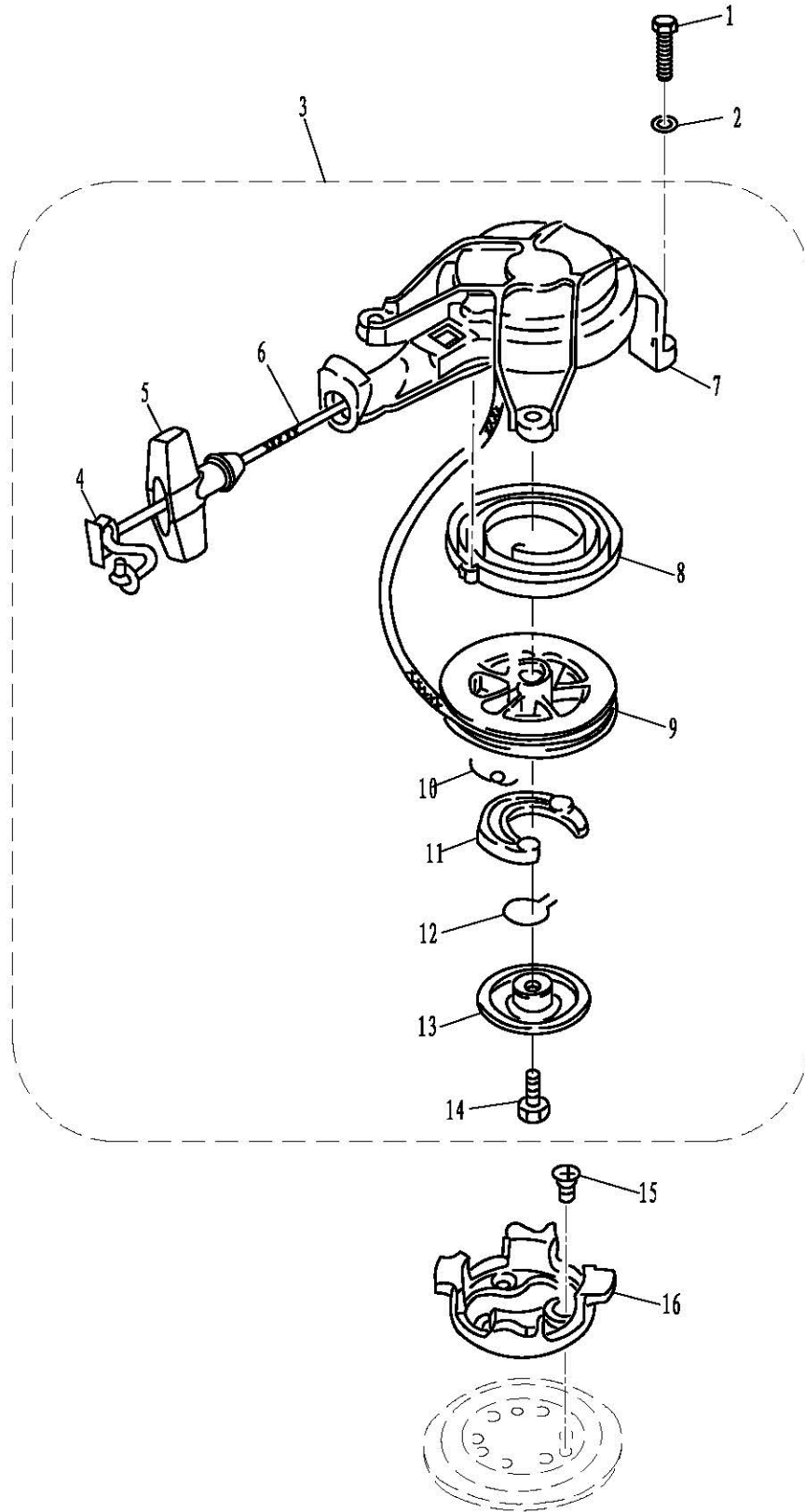
PARTS NAME: CARBURETOR ASSY





零部件名称: 起动机组件

PARTS NAME: STARTER ASSY



零部件名称:

起动机组件

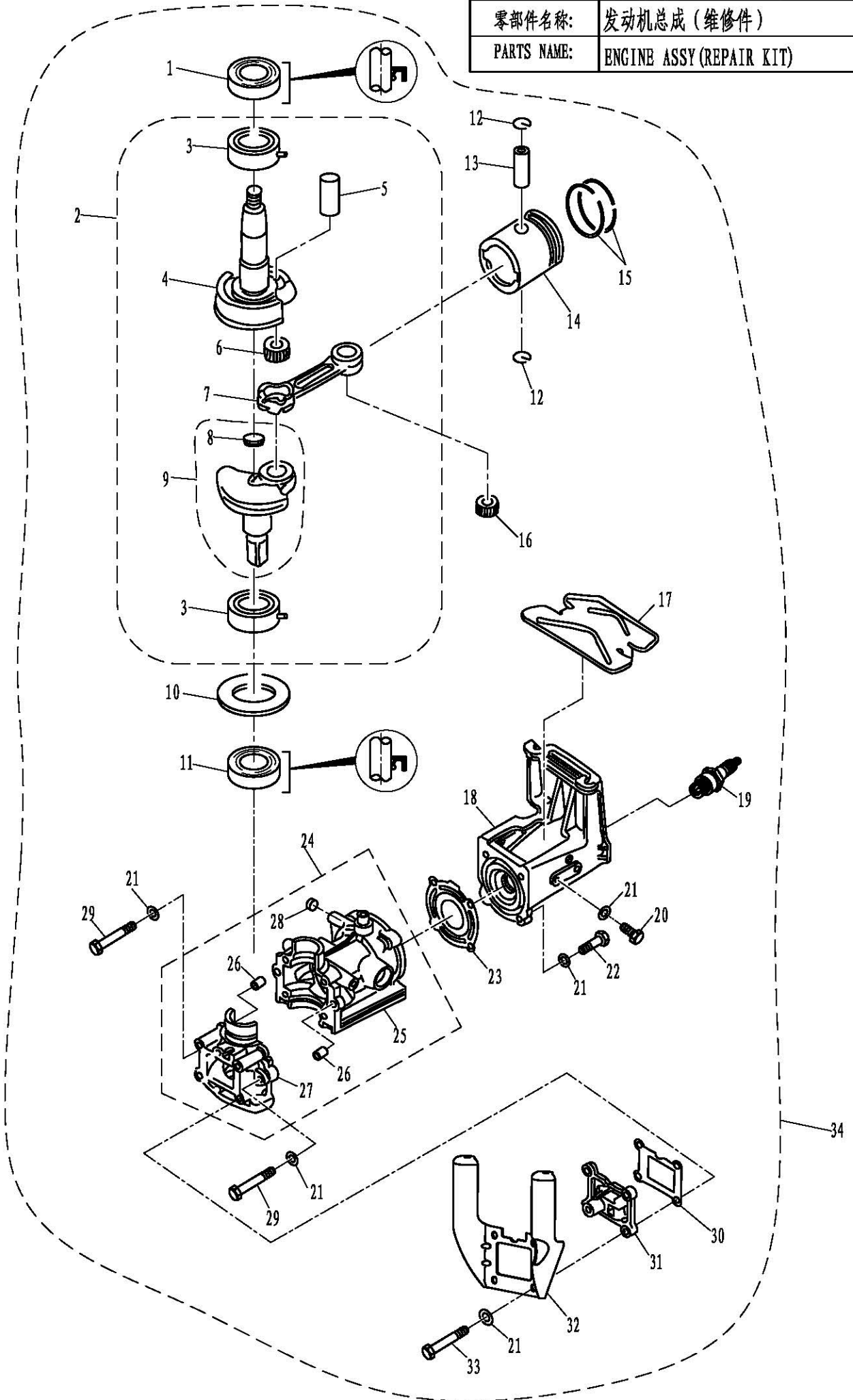
PARTS NAME:

STARTER ASSY

SN. 参照号码	PART NO. 零件编号	DESCRIPTION 零件名称(中文)	DESCRIPTION 零件名称(英文)	QTY 数量					REMARKS 备注
1	GB/T5783-M6x16	六角螺栓 M6x16	BOLT M6x16	3					
2	GB/T97.1-6	平垫圈6	WASHER 6	3					
3	T2-04000600	起动机组件	STARTER ASSY	1					
4	F4-04130102	起动手柄盖	COVER, HANDLE	1					
5	F4-04130101	起动手柄	HANDLE, STARTER	1					
6	T2-04000609	起动绳φ4x1.3m	STARTER LINE φ4x1.3m	1					
7	T2-04000601	起动机外壳	CASE, STARTER	1					
8	T2-04000602	涡形弹簧	SPRING, VOLUTE	1					
9	T2-04000603	起动轮	WHEEL, START-UP	1					
10	T2-04000605	卡瓣扭簧	TORSIONAL SPRING,	1					
11	T2-04000604	起动卡瓣	PAWL DRIVE	1					
12	T2-04000607	压板弹簧	SPRING, PLATE	1					
13	T2-04000606	起动压板	PLATE, START-UP	1					
14	GB/T5783-M6x12	六角螺栓 M6x12	BOLT M6x12	1					
15	GB/T819.1-M6x12	沉头螺钉 M6x12	SUNK SCREW M6x12	3					
16	T2-04000010	起动轴套	PULLEY, STARTER	1					

零部件名称: 发动机总成 (维修件)

PARTS NAME: ENGINE ASSY (REPAIR KIT)







零部件名称: 附件 I (修理件)

PARTS NAME: APPENDIX I (REPAIR KIT)

